

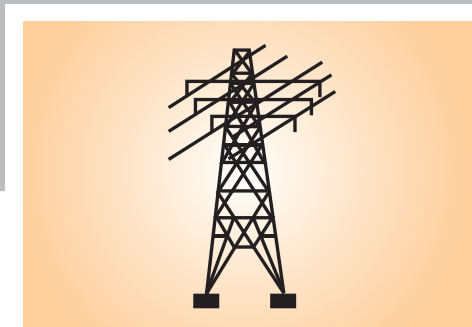
ESSEN[®] HM 28 STAR

AC/ DC +

Mild Steel electrodes For effective surface treatment

A5.1 E6013

Medium coated rutile-cellulosic electrode with excellent performance welding medium to heavy sections in mild steel



PROPERTIES

MECHANICAL PROPERTIES

APPLICATIONS

WELDING PROCEDURE.

RECOMMENDED AMPERAGE	
Size	Current
2.50mm x 350mm	065 - 090 Amps
3.15mm x 350mm	060 - 125 Amps
4.00 mm x 450 mm	095 - 160 Amps
5.00 mm x 450 mm	120 - 200 Amps

PACKING	
2.50 mm x 350mm 20 Kg	54 pcs/kg (Approx)
3.15 mm x 350 mm 30 kg	36 pcs/kg (Approx.)
4.00 mm x 450 mm 4.2 kg	17pcs/kg (Approx.)
5.00 mm x 450 mm 4.2 kg	11pcs/kg (Approx.)



ESSEN
WELDING ALLOYS PVT. LTD.



ESSEN & AZUCAR
PREMIUM WELDING ALLOYS

ESSEN[®] PRODUCTS ARE MANUFACTURED AND SUPPLIED
ESSEN WELDING ALLOYS PVT. LTD. PUNE, INDIA,
TM REGISTERED IN INDIA BY: M/S. ASUGAR ENGINEERS PVT. LTD.
PUNE, VIDE REGD. T.M. NO. 543993 B.

'Sai maa', Post : Kadam Wak Wasti via Loni Kalbhori, Post P. B. No.1, Tal.: Haveli,
Dist.: Pune 412201, INDIA TEL: +91 -20 -65781493, 26911175 26911029 FAX: +91-20-26911030
Email: asugar@pn3.vsnl.net.in / essenelectrode@vsnl.net.in
Website: essenelectrode.com